

# TRBOnet Enterprise/PLUS

## Radio Allocation Module

### User Guide

Version 5.5

World HQ  
Neocom Software  
8th Line 29, Vasilyevsky Island  
St. Petersburg, 199004, Russia

US Office  
Neocom Software  
15200 Jog Road, Suite 202  
Delray Beach, FL 33446, USA

Internet  
Email: [info@trbonet.com](mailto:info@trbonet.com)  
[WWW.TRBONET.COM](http://WWW.TRBONET.COM)

Telephone  
EMEA: +44 203 608 0598  
Americas: +1 872 222 8726  
APAC: +61 28 6078325



## Notices

This document is for informational purposes only. Neocom Software offers no warranties, express or implied, in this document.

Neocom and the Neocom logo, TRBOnet and the TRBOnet logo are either registered trademarks or trademarks of Neocom Software, Ltd.

MOTOROLA, MOTO, MOTOROLA SOLUTIONS and the Stylized M logo are trademarks or registered trademarks of Motorola Trademark Holdings, LLC.

Intellectual property rights protect the voice coding technology embodied in this product including patent rights, copyrights and trade secrets of Digital Voice Systems, Inc. This voice coding technology is licensed solely for use within this communications equipment. U.S. Pat. Nos. 6,199,037, 5,870,405, 5,754,974, 5,664,051, 5,630,011, 5,517,511, 5,491,772, 5,247,579, 5,226,108, 5,226,084, 5,216,747 and 5,081,681.

Microsoft, Windows, SQL Server and the .NET logo are either registered trademarks or trademarks of Microsoft Corporation in the United States and/or other jurisdictions.

Other product or company names mentioned herein may be trademarks of their respective owners.

© 2020 by Neocom Software, Ltd. All rights reserved.

This document was last revised on February 14, 2020.

## Contents

1	Introduction.....	1
1.1	About This Guide.....	1
1.2	About TRBOnet.....	1
1.3	Contacts .....	1
2	Overview .....	2
3	Configuring TRBOnet Dispatch Console.....	2
3.1	Custom Fields.....	2
3.2	Logical Groups.....	2
3.3	Users.....	4
3.4	Radios.....	5
4	Connecting Barcode Scanner.....	7

# 1 Introduction

## 1.1 About This Guide

This document is intended for administrators setting up evaluation and proof-of-concept deployments of MOTOTRBO Dispatch over IP solutions. The document describes the minimum steps to configure the Radio Allocation module in the TRBOnet Enterprise software.

## 1.2 About TRBOnet

TRBOnet is a suite of professional applications for MOTOTRBO digital two-way radio networks. TRBOnet manages voice and data communication paths across network endpoints. It provides a unified graphical dispatcher workbench interface for the entire range of workforce fleet management tasks.

For more information about TRBOnet products, refer to our [website](#).

## 1.3 Contacts

Region	Phone	Email & Support
EMEA	+44 203 608 0598	<a href="mailto:info@trbonet.com">info@trbonet.com</a> — general and commercial inquiries
Americas	+1 872 222 8726	<a href="mailto:support@trbonet.com">support@trbonet.com</a> — technical support
APAC	+61 28 607 8325	<a href="https://trbonet.com/kb/">https://trbonet.com/kb/</a> — online knowledge base

## 2 Overview

The TRBOnet Radio Allocation module can be used to automate checking out/checking in (allocating/reallocating) radios using 'Honeywell Metrologic 1900' barcode scanners.

The check-in/check-out procedure is quite easy and fast. The user first scans the radio's barcode and then scans their own badge. If the user is authorized, they can check out/ check in the radio.

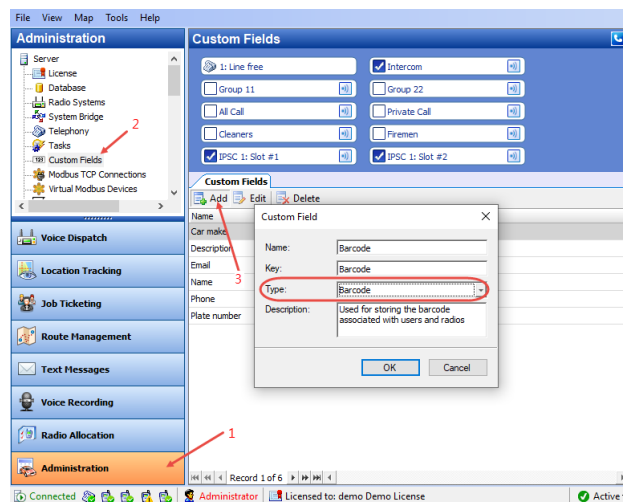
## 3 Configuring TRBOnet Dispatch Console

This section describes how to appropriately configure users and radios in TRBOnet Dispatch Console.

### 3.1 Custom Fields

This section describes how to add a custom field of the Barcode type.

- Go to **Administration** (1), **Custom Fields** (2)

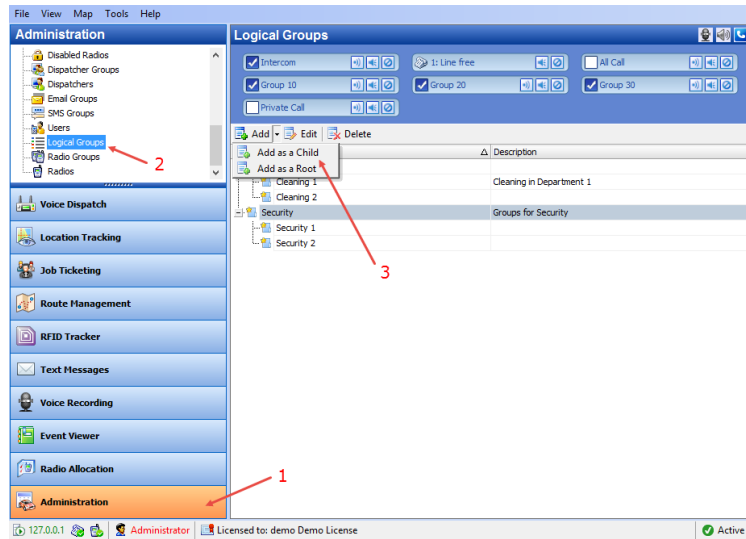


- Click the **Add** button (3).
- In the **Custom Field** dialog box, specify the parameters of the field, making sure that the Type value is **Barcode**.

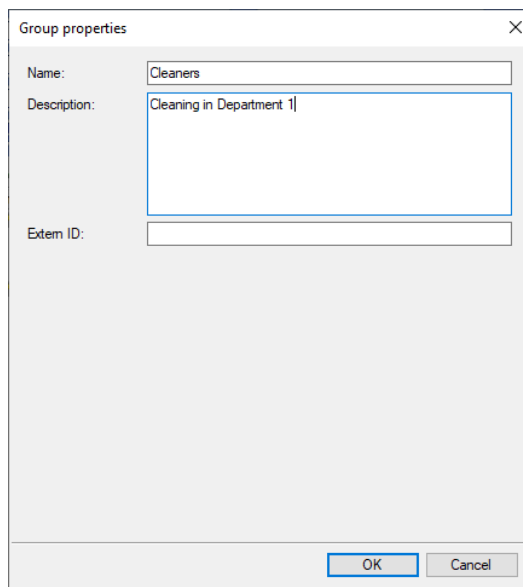
### 3.2 Logical Groups

This section describes how to create logical groups. You must create at least one logical group that will be common to both the User and Radio so that the User will be able to check out that Radio.

- Go to **Administration** (1), **Logical groups** (2):



- Click **Add** (3) to add a logical group.
  - Select **Add as a Root** to add a logical group as a root folder.
  - Select **Add as a Child** to add a logical group as a child folder.



The 'Group properties' dialog box contains the following fields:

- Name: Cleaners
- Description: Cleaning in Department 1
- Extern ID: (empty)

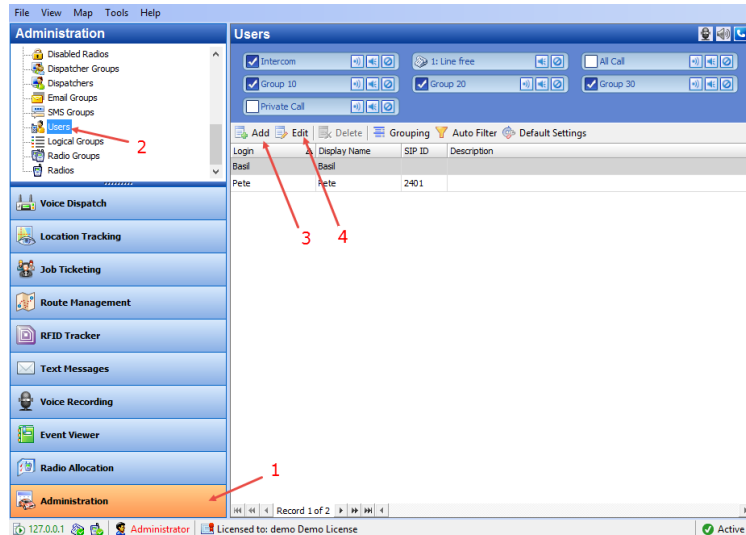
Buttons: OK, Cancel

- Specify a **Name** and **Description** for the logical group.
- Click **OK** to add the logical group.

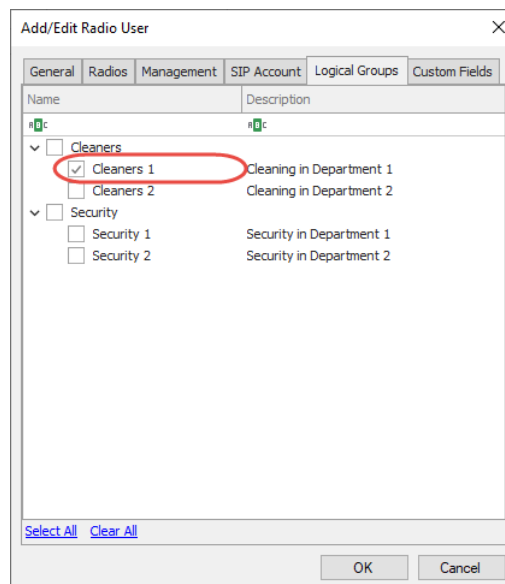
### 3.3 Users

This section describes to appropriately configure the user so that they can check out radios.

- Go to **Administration** (1), **Users** (2) to add/edit/delete users in the system:



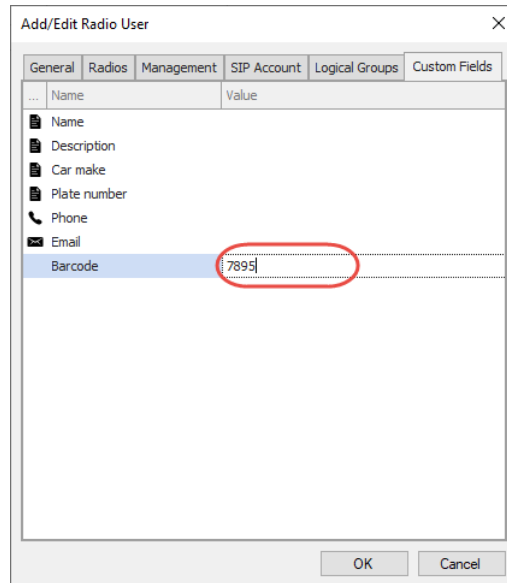
- Click either **Add** (3) to add a user to the system, or **Edit** (4) to edit the selected user:
- In the dialog box that opens, go to the **Logical Groups** tab.



- Make sure that at least one logical group is selected.

Note: This logical group must be common with the radio's logical group so that the user will be able to check out that radio.

- Go to the **Custom Fields** tab.



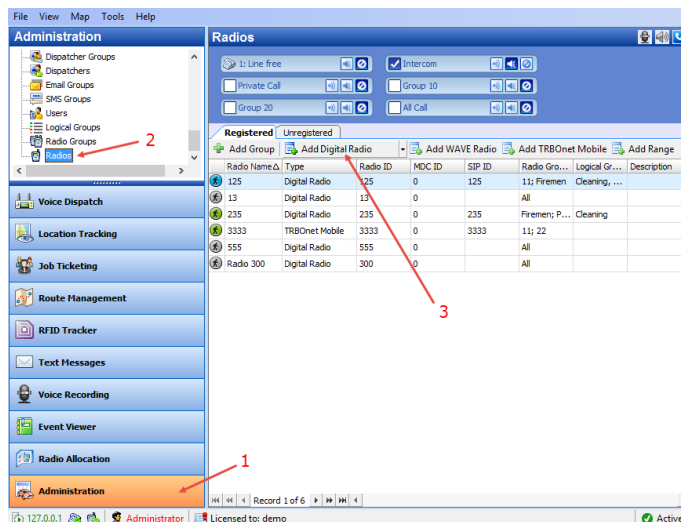
- Make sure that the Barcode field is populated with a unique value identifying the user.

Note: Print this value as a barcode and keep as the user's badge.

### 3.4 Radios

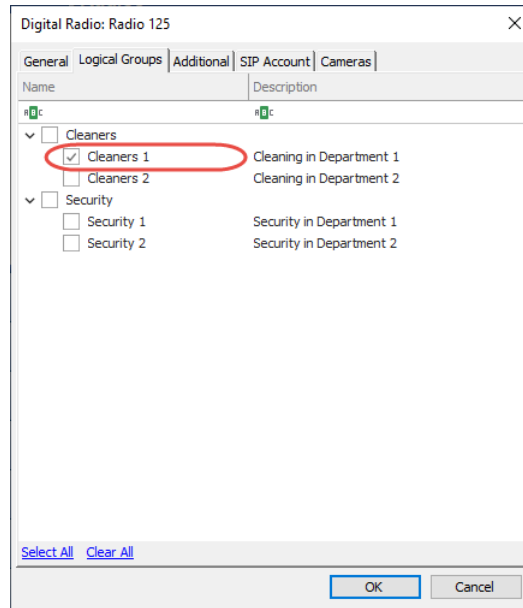
This section describes to appropriately configure the radio so that it can be checked out to users.

- Go to **Administration** (1), **Radios** (2).



- Click **Add Digital Radio** (3) to add a new radio or double-click the selected radio.
- In the dialog box that opens, go to the **Logical Groups** tab.

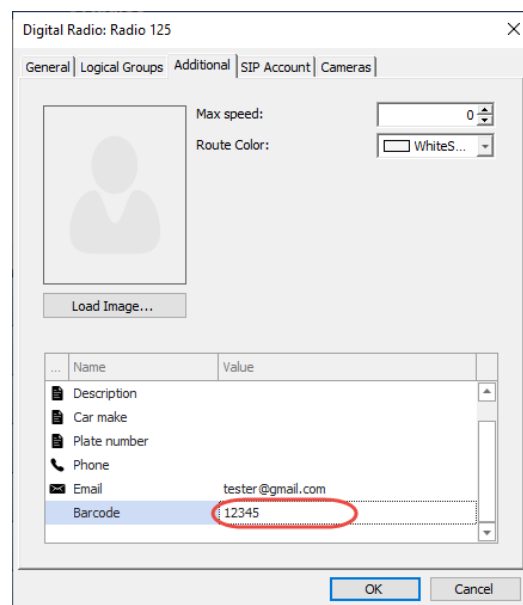




- Make sure that at least one logical group is selected.

Note: This logical group must be common with the user's logical group so that that user will be able to check out the radio.

- Go to the **Custom Fields** tab.



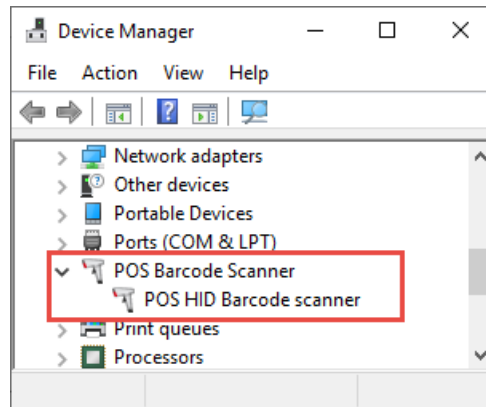
- Make sure that the Barcode field is populated with a unique value identifying the radio.

Note: Print this value as a barcode and keep as the radio's barcode.

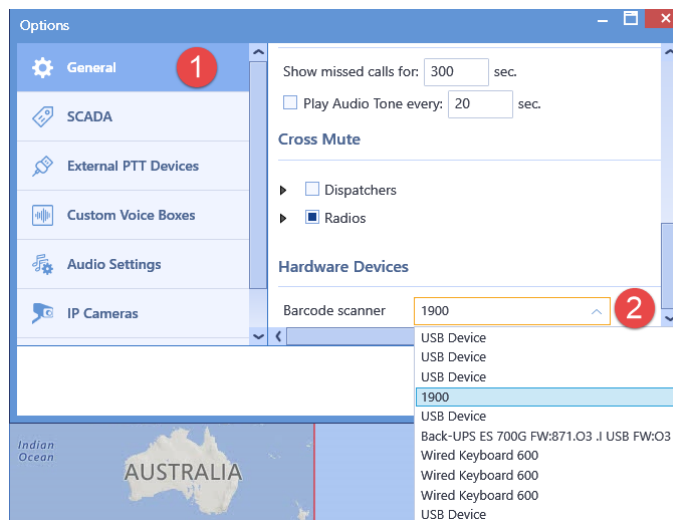
## 4 Connecting Barcode Scanner

This section describes how to connect and configure a barcode scanner.

- Connect the barcode scanner to a PC via the USB cable and see it displayed in the Device Manager as a "POS HID Barcode scanner".



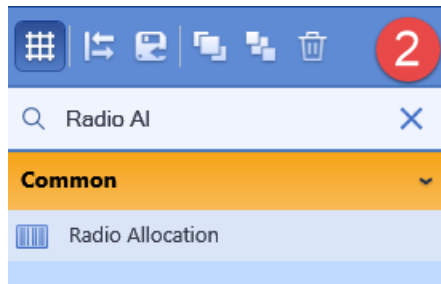
- Run the TRBOnet One application.
- Go to **Console Settings > General > Hardware Devices > Barcode scanner**.
- From the drop-down list, select **1900**.



- Add a **Workspace** tab (1).



- In the right pane, go to **Common > Radio Allocation** (2).



- Drag it to the newly created workspace (3).

